

## Technical Specifications

### Principle

Electrical impedance for counting

### Parameters

WBC, LYM#, MID#, GRA#, LYM%, MID%, GRA%, RBC, HGB, HCT, MCV, MCH, MCHC, RDW-CV, RDW-SD, PLT, MPV, PDW, PCT, P-LCR, and 3 Histograms for WBC, RBC and PLT

### Throughput

Up to 60 samples per hour

### Sample Volume

Whole blood: 9µl, Pre-dilution blood: 20µl

### Aperture Diameter

WBC: 80µm RBC: 50µm

### Alarms

Error messages

### Display

10.4" large color LCD

Jinan Kinghawk Technology Co.,Ltd  
No.205, E South Building,  
Environmental Protection Technology Park,  
Jinan 250101, Shandong, China  
Tel: 0086 531 8970 2821/2/3/4  
Fax: 0086 531 8268 7770  
E-mail: export@kinghawktech.com

### Printout

Built-in thermal printer, various print-out formats;  
External printer optional

### Input

Mouse and keyboard, connected by USB ports  
Touching screen(optional)

### Interface

USB x3, RS232 x2

### Storage

10,000 sample results including histograms,  
available to increase storage by expanding  
memory card

### Working Conditions

Temperature: 15-35°C, Humidity: ≤80%  
Atmospheric pressure: 70Kpa-106Kpa  
Power supply: AC100-240V, 50±1Hz

### Dimension

325x370x545mm(L\*W\*H)

### Weight

16Kg(net), 23Kg(gross)

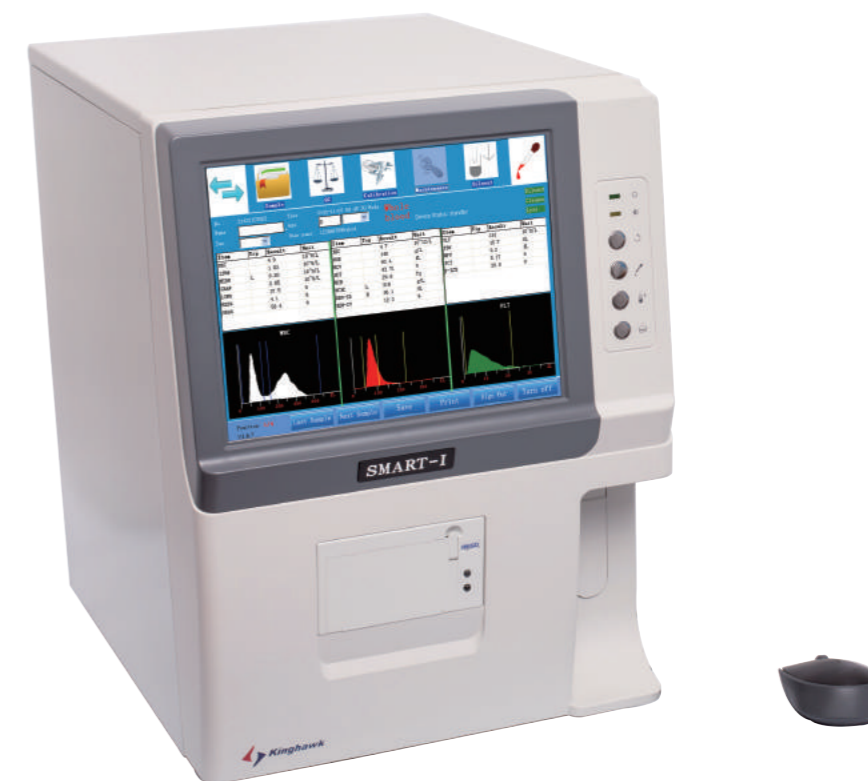


**ABKAR MEDICAL  
EQUIPMENTS L.L.C**

*Reliable Partner in Helathcare*

☎️ 📞 :+971 56 2351038  
📞 :+971 55 5546653

Abkar Medical Equipments L.L.C  
P.O. Box: 11037, Shop #4, Zarouni Building  
Opp. Azhar al Madina Hypermarket,  
Al Maktoum Hospital Road,  
Deira, Dubai, UAE



- 20 parameters + 3 histograms
- 10.4" large color LCD
- Touch screen (optional)
- Up to 60 samples/hour
- 2 counting channels
- Stable, durable and economical

**SMART-I**

*Auto Hematology Analyzer*

*Profession & Care*

**Jinan Kinghawk Technology Co.,Ltd**

# SMART-I Auto Hematology Analyzer

## Performance

### High Stability & Accuracy

- Use the most advanced binuclear embedded digital circuit system, to make the analytical ability great and stable
- 2 counting channels of WBC and RBC, to make the test results more accurate and less cross- contamination

### User-friendly System

- 10.4" large color LCD displays full data,easy for user to view
- Brief operation instruction built in software,
- Separate module design, very simple mechanical structure, easy maintenance
- Self check for hardware, alarm for error
- Reagent volume detectors for Lyse, Cleanser and Diluent, as optional function

## Reagents



Lyse 1L  
 Cleanser 5L  
 Diluent 20L  
 Conct.Cleanser 100ml

### Reliable Operation System

- ARM intelligent micro-processing technology
- Data analysis: intelligent pulse formulation technology
- Classification: floating landmark technology
- Module design, fast maintenance

### Technical Features

- 2 counting modes: whole blood, pre-dilution blood
- Sample pre-dilution: internal diluter, add 1ml diluent automatically by the needle, no need to add diluent manually, to avoid error
- Calibration: automated or manual
- QC: comprehensive QC program, forming and printing the histogram automatically
- Block removal: Real time monitor, High voltage burning soak, flush and back flush

## Start-up Kits



Lyse 500ml  
 Cleanser 1L  
 Diluent 5L  
 Conct.Cleanser 100ml



## Operation System

### 10.4"Large Color LCD



### Functional Buttons

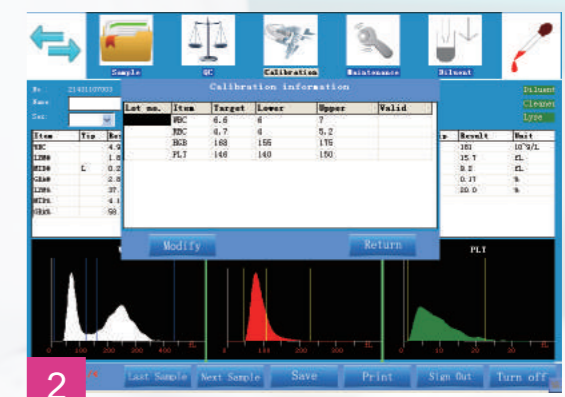


## User-friendly Software



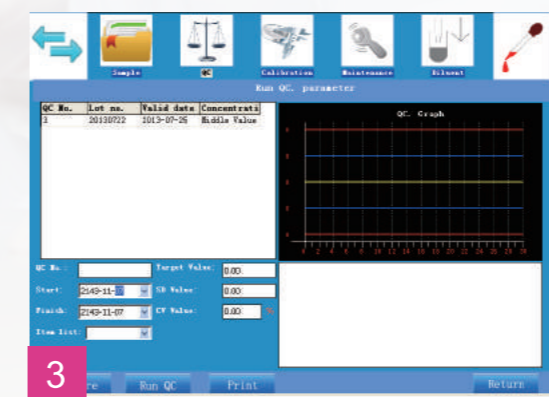
1

- Full screen info with color histogram



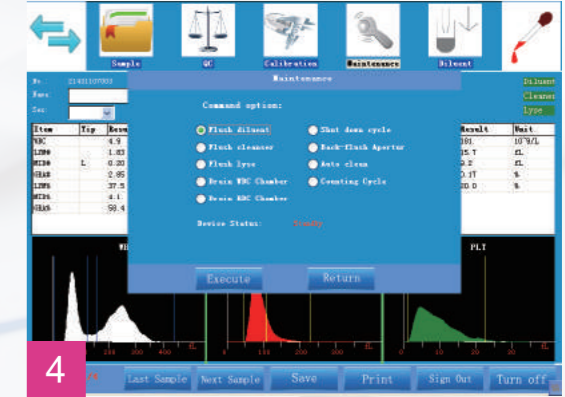
2

- Calibration info



3

- QC info



4

- Maintenance info